

**17** ArchiTeam  
Awards 2017

# — Contents

Members Benefits	5
Judges	6
Winners	10
Residential New	16
Residential Alterations	32
Commercial	58
Community	70
Contribution	74
Unbuilt	80
Thank You	90

## ARCHITEAM WOULD LIKE TO THANK OUR SPONSORS



## — Members Benefits

ArchiTeam Cooperative has been supporting architects in small, medium and emerging practices for over 25 years. Since our founding ArchiTeam has evolved to provide members with a wide range of professional development, support, networking and marketing opportunities, together with competitive insurance premiums.

With a growing national membership, the ArchiTeam community nurtures small studios, collaborative work practices and skill sharing, as well as providing our members with essential member support services.

### **Members of ArchiTeam enjoy benefits including:**

Join Australia's voice of small, medium and emerging architecture practices

Essential member services include:

#### **PROFESSIONAL INSURANCE**

Protect your business with affordable PI and PL insurance. Fast obligation free quotes.

#### **CONTINUING PROFESSIONAL DEVELOPMENT (CPD)**

Earn points and keep up with the latest innovations, techniques and business practices at discounted member rates.

#### **ARCHITEAM AWARDS**

Showcase your work in the Awards. Free first entry and invite to the Awards exhibition.

#### **BUSINESS SUPPORT DOCUMENTS**

Client Architect Agreements, Employment Contracts and our OH&S Starter Kit – tailored to the needs of small and medium sized practices.

#### **FREE ONLINE PRESENCE**

You'll be easier to find online with our 'Find an Architect' business directory and project galleries.

#### **SUPPORT**

Be part of our members only Online members discussion forum, with support from 600+ members who understand what you're going through.

#### **NEWS**

Receive our monthly newsletter, DATUM delivered straight to your inbox.

#### **Be heard**

Get involved with the co-op and make the voice of small practitioners heard.

Membership to ArchiTeam is open to architects and people working in related fields within Australia.

**If you are interested in joining ArchiTeam or would like further information please visit [www.architeam.net.au](http://www.architeam.net.au) or call +61 3 9329 0033.**

# — Judging Panel



## **KAREN ALCOCK**

Karen has 20 years experience working on multi residential and award winning housing projects.

Karen established MAA after 10 years working as a director of Neometro Architects. Karen places a strong emphasis on the critical role of design in architectural practice, in addition to a strong design focus, Karen also brings to the practice strengths in project delivery and practice management.

Karen is actively involved in promoting the importance of design and architecture in the community. She is the Chair of The Melbourne University Architecture Advisory Board and a member of the Australian Institute of Architects, Victorian Chapter Council. Karen was made a fellow of the Australian Institute of Architects in 2016.



## **GRANT AMON**

Grant Amon Architects involvement in design & architecture has spanned a variety of projects ranging from residential, office, community and commercial through to the hospitality industry with a range of restaurants, hotels, bars and cafes. Based in St Kilda, the practice actively pursues an ongoing interest in spatial manipulation, the crafting of objects and incorporation of local references and histories.

Recently expanding to include larger scale multi-use projects, including inner urban renewal, coastal and alpine resorts, tourism, landscape & retail projects, GAA capabilities are broad based, flexible and environmentally responsible. With a high emphasis on design particular to each project we aim to produce unique and efficient solutions for our clients.



## **ALBERT MO**

Based in Melbourne, Architects EAT has developed both a reputation in residential and apartment projects, and at the same time specialises in the hospitality and retail sector projects. Albert was a chapter councillor on the Victorian Chapter of the Australian Institute of Architects and maintains guest

critic positions in various architecture school across Australia. Albert's architectural skills range from creative conceptual design to detailed project design and his work has been recognised by awards and by articles in both Australian and international architecture journals.



## **GRACE MORTLOCK**

Grace joined Other Architects as lead designer in 2016, building on several years of experience as a project architect. She has intensive knowledge of construction, materials and detailing, and is expert in completing projects on time and within the budget.

In 2013 Grace co-founded Otherothers, a design organisation that operates in parallel with Other Architects to undertake projects beyond the scope of conventional architectural practice. As an architectural curator, her work focuses on strategies of spectacle, communication and spatial transformation. Her work has been exhibited internationally. In 2014 she was awarded the Ascham Leadership Scholarship, allowing her to participate in the public program of the Venice Architecture Biennale.

Grace curated the University of Sydney's Faculty of Architecture graduate exhibitions in 2011

(with Dr Claudia Perren) and 2012 (with Professor Michael Tawa). Featuring giant inflatable structures, mirrored drinking rooms, transportable displays and construction scaffolds, both exhibitions included over 200 student works, and transformed a 1960s-era university building into an event space for over 2000 visitors. In addition to her ongoing role as curator, she teaches a dedicated course which instructs students in exhibition logistics. Grace has conducted Masters-level research into architectural galleries under the direction of Professor Sandra Kaji-O'Grady, and was an invited instructor at "Infloatables", the Architectural Association School of Architecture (London) 2012 Visiting School. She holds Bachelor of Design in Architecture and Master of Architecture with Honours degrees from the University of Sydney and is a registered Architect. Grace currently teaches in the Masters program at the University of Technology.



## **AARON PETERS**

Aaron Peters is a director of Vokes and Peters, a Brisbane based architectural practice undertaking boutique residential, commercial and institutional projects. Aaron has contributed articles to a number of architectural publications including AR Asia Pacific, Architecture Australia and Houses Magazine

and has led design studios at The University of Queensland and Bond University. Vokes and Peters run an (ir)regular public talk series Garden Variety featuring both Australian and international speakers.



**EMMA TELFER**

Emma is the executive director of Open House Melbourne, and like the organisation, she champions the city of Melbourne through its built environment. Open House is a public architecture organisation that empowers people to be active participants in the building of their city.

Emma is also a founding partner of the Office for Good Design, a unique curatorial group that works with private organisations and major cultural institutions to realise their interest in design, architecture, and the broader creative industries.



**FIONA WINZAR**

Fiona Winzar is Principal of FRED Architecture a design and sustainability focused practice based in Melbourne. FRED Architecture has evolved from multi-award winning practice Fiona Winzar Architects established in 2005. Recognising the need for more economical, sustainable and practical living, our focus is for Functional, Relaxed, Environmental, Design, FRED Architecture.

multiple awards and publications. She started her own architectural practice in 2005 after more than 15 years of experience with some of Australia's top architectural firms. The rebranded practice, FRED Architecture now specialises in super high performance dwellings incorporating European Passive House design principals with the aim to encourage carbon neutral houses without compromise to innovative design.

Fiona's architectural work is recognised by the architectural community here and abroad with

Fiona's work has been widely published both locally and internationally.



# The manufacturer that builders and designers use in their own homes.

**Proudly Australian Owned**

**Providing Gippsland Jobs**

Our windows are handcrafted using the highest quality glass, timber and aluminium.

We are proud to support jobs in Gippsland by sourcing local materials at every opportunity.

Visit one of our showrooms or website when planning your next project –

[valleywindows.com.au](http://valleywindows.com.au)

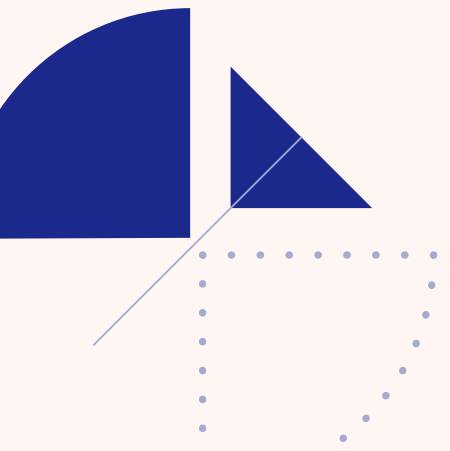
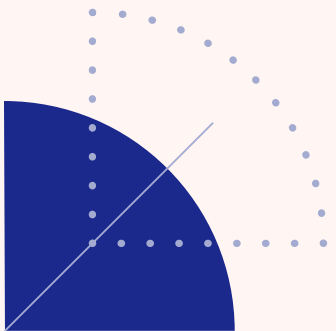
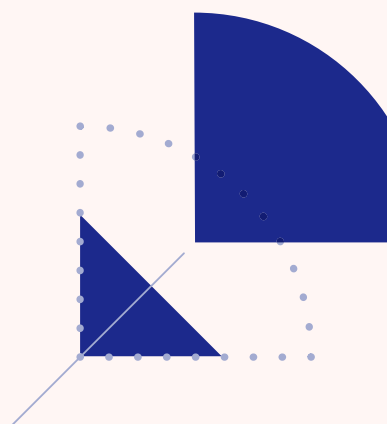
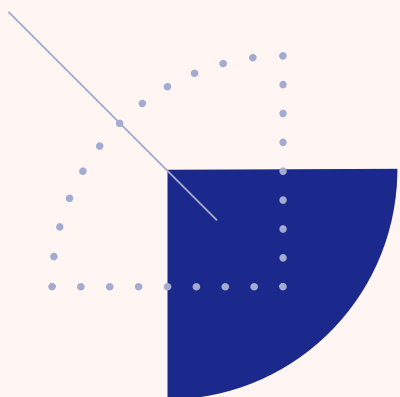
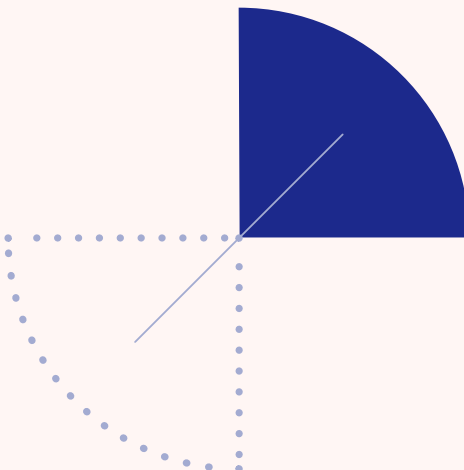
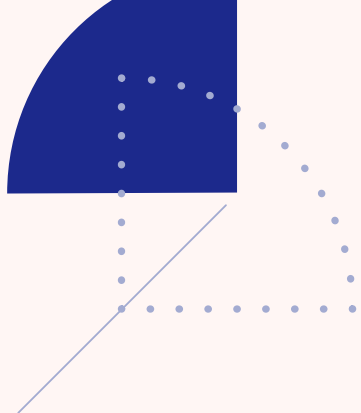
**Morwell**  
26 Swan Rd  
Call 03 5128 5879

**Mount Waverley**  
24/21-35 Ricketts Rd  
Call 03 9594 8000

Find us on Facebook



— **Winners**



# — Winners

## RESIDENTIAL NEW + ARCHITEAM MEDAL Dark Horse — Architecture Architecture



Like a good piece of art, it is polarizing. Dark Horse House is a layered and complex project that embodies and manifests a lot of the architect's thinking and theories.

At first glance, it is hard to understand and appreciate the sequence of spaces, they unfold according to the condition of available natural light, changing the perception of the otherwise typically dark worker's cottage interior. The spaces expand and contract, and from cool to warm depending on the program of the space. Details are deftly handled with precision and commitment, their composition and progression though are not subtle, they are inventive, playful and delightful.

With the skill of the architect, the 4.5m wide worker's cottage typology has been changed and exploited, extending the life of this typology, allowing general public a new understanding of compact inner city living, and livability in terms of light and ventilation, the familiar and the unfamiliar.

Dark Horse House is manipulative, showing the architect's confidence, rigour and maturity in the realization of their many many concepts. Congratulations on winning the ArchiTeam Medal for 2017.

ARCHITEAM  
MEDAL  
WINNER



## RESIDENTIAL NEW Tess + JJ's House — po-co Architecture



# — Winners

RESIDENTIAL ALTERATIONS  
**Light Corridor House**  
— FIGR Architecture Studio



COMMERCIAL  
**Workshop Bros Glen Waverley**  
— Studio Esteta



SMALL PROJECT MEDAL  
**Cairo Studio**  
— Nicholas Agius Architects



SMALL  
PROJECT MEDAL  
WINNER

SUSTAINABILITY MEDAL  
**Richmond Hill**  
— Melbourne Design Studios (MDS)



SUSTAINABILITY  
MEDAL  
WINNER

CONTRIBUTION  
**Panfilo**  
— Warwick Mihaly



The Small Projects Medal is a new ArchiTeam awards category for completed projects under 80sqm in area and/or \$150,000 in budget. 'Complexity and inventiveness' are cited in the award criteria, recognising that small projects can be ideal vessels for both problem-solving and bigger ideas.

Nicholas Agius Architects' Cairo Studio transforms a 23sqm studio within Best Overend's 1936 Cairo apartment complex, in Melbourne's Fitzroy, into a two-person unit with three distinct rooms. This is achieved through an ingenious, MacGyver-

like nesting of functions: laundry is concealed beneath platform bed, door performs as bookcase and pantry, kitchen doubles as room divider, bathroom incorporates wardrobe.

Whereas some micro apartment designs can seem utilitarian and grim, Cairo Studio is enlivened by a playful palette of details and colours, and interconnected via movable elements and apertures. Like a deluxe ocean-liner cabin, where everything has its perfect place, this project exemplifies the pleasures of compact living.

MDS inspired their developer clients to go well beyond minimum standards for the six townhouses called Richmond Hill, reflected by the project gaining the 2013 BDAV 10 Star Challenge award even before it was ready to build. While ultimately the developers did not embrace the full potential of the project for sustainability, its 7 star rating still puts it well above the average. The new owners benefit from the added comfort of passive design, water storage and a capacity to install full PV and solar hot water unit in the future.

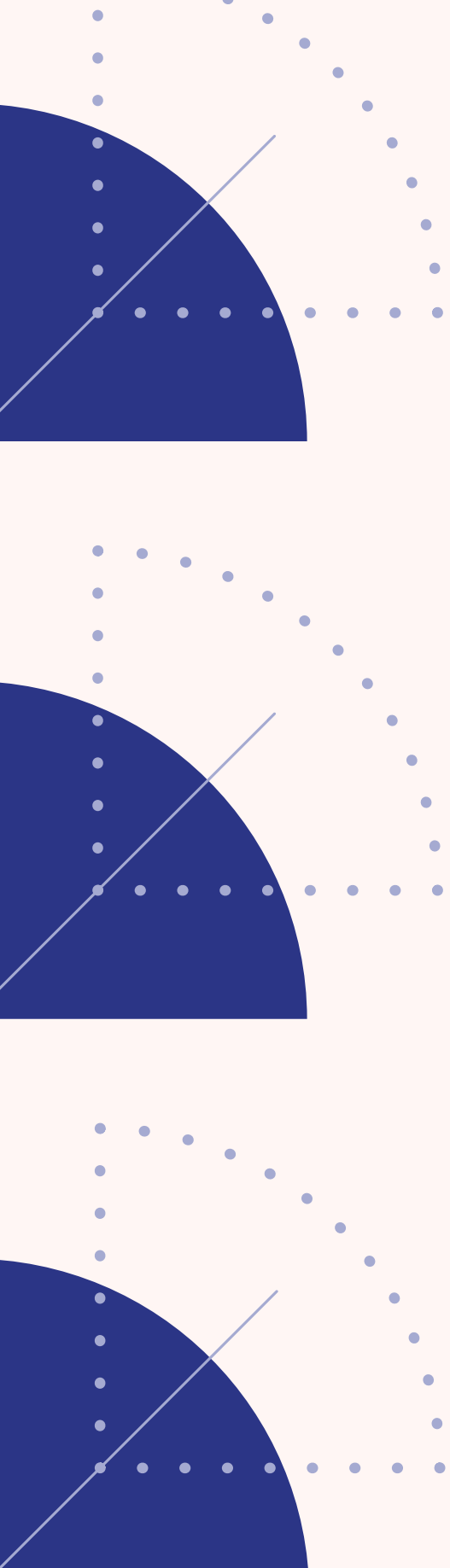
MDS has integrated these sustainability features with a considered and seamless design approach, making an exemplary addition to the Richmond Hill precinct. The homes are warm, generous and highly detailed. Developers usually discard higher performance building design due to 'economic pressures' but by setting the bar higher, MDS has succeeded in achieving an energy efficient design within a higher density urban setting.



# — Residential New

**Sponsored by Valley Windows**

This category awards the best overall design and architecture of a built private home, apartment complex or multi-unit residential development.



WINNER

Dark Horse — Architecture Architecture



PHOTO: Peter Bennetts

03 9417 0995  
 xn@archarch.com.au  
 www.architecturearchitecture.com.au

— Design intent

In a row of workers' cottages, there is one Dark Horse – a handsome creature. The stepped parapet, centred window, sidelined door and entrance awning are carried with the familiar, unassuming composure of its neighbours. Yet here the materials, stark in their composition, have a distinctly 21st century character, hinting at the contemporary home within.

Indeed, the palette of black, white and grey is carried throughout the house, lending tonal variation and spatial depth to an otherwise diminutive site. The play of tones establishes a subtle field of spaces that expand and contract, creating moments of generosity and intimacy.

In the living areas, where space and light are abundant, the material palette is darker, creating spaces of comfortable repose. Here, sensitive use of acoustic treatment reinforces these qualities.

In the corridors where space is tighter, the palette lightens and the ceilings lift. The corridor walls – slim and prefabricated to maximise internal space – are lined with metal sheet to reflect light deep into the house.

In the heart of the house, the living areas open onto a courtyard. The high-ceilinged corridors pinwheel out from this heart, establishing a sunlit centre around which most daily activity occurs.

Upstairs, a warmer palette of timber floors and lining boards sets the tone for the private quarters, while dramatic skylights and generous windows cast this Dark Horse in abundant natural light.

— Judges Comments

This rich and varied project unfolds in a succession of compelling spaces. Dark Horse's unassuming street elevation bookends neatly into the adjoining worker's cottage. Subtle detailing in brick, concrete and painted steel set the tone for the spaces to follow.

The entry corridor passes a small courtyard located behind the front room of the house. This space delivers light and ventilation into the heart of the plan, whilst also providing a delightful garden.

The material palette of the lower floor is largely composed of exposed concrete and muted paint tones. The refinement and precision of these building elements ensures that the spaces feel crafted and humane despite their industrial aesthetic. Upstairs, rooms are clad in clear finished timber boards providing a rich, warm contrast to the lower floor.

Dark Horse is a striking achievement that showcases the considerable talents of its architects. More importantly, it is a dignified response to its setting and a comfortable home to its occupants. This project is a most worthy recipient of the Residential – New Award.



## WINNER

## Tess + JJ's House — po-co Architecture



PHOTO: Tatjana Plitt

0413 869 825  
fiona@po-co.com.au  
www.po-co.com.au

## — Design intent

The project brief was for a new two storey house in a heritage context for a young family of four. The constraints of the long and skinny site included a very sensitive neighbour to the south boundary, and very relaxed neighbours to the north.

With this in mind, it was decided to maximise the double storey volume towards the north and front of the house. In order to keep the rhythm of single storey houses along the street, we created the illusion of an over-scaled single storey house from the front facade, and reinterpreted the typical single window and front door arrangement of its neighbours.

Internally, past the entry and master suite on the ground floor, the kitchen and dining area opens up into a double height volume where the owners would do most of their entertaining. This area focusses on the desirable aspects of the site – a small deck and established birch trees to the north, and the sky to the east. The family room at the back of the house feels more sunken and cosy, and focuses its view down toward the pool for privacy from the apartment blocks behind.

Upstairs, the kids' zone has a balance of privacy and openness, with a very 'cubby-like' feel. The shared corridor has a fun volume with a sloped ceiling and batted screens at either end, which the kids use as their play area.

## — Judges Comments

At first glance, this house sits quietly in an established streetscape. However, closer examination reveals that the most remarkable features of the building are situated at the centre of the plan where a delightful, light-filled double height volume has been created.

This unexpected space is embellished by an adeptly handled manipulation of the floor plan that fractures the linear path of circulation and makes space for a small courtyard between and living and dining rooms.

Carefully positioned high level openings frame expansive views of the sky and surrounding foliage to create a strong sense of generosity on this tight suburban site. The raking balustrade of an elegant stair located at the rear of the kitchen and dining rooms adds a dynamic graphic quality to the volume and enriches the act of moving between the upper and lower levels of the house by permitting oblique views across the rooms below.

Tess and JJ's House is a mature and assured piece of architectural design from an emerging practice. It is a most worthy recipient of the Residential – New Award.



COMMENDATION  
**AQUAS PERMA SOLAR FIRMA**  
— CplusC Architectural Workshop

02 9690 2211  
imogen@cplusc.com.au  
www.cplusc.com.au



COMMENDATION  
**Datum House**  
— FIGR Architecture Studio

0400 212 833  
michael@figr.com.au  
www.figr.com.au



**FINALIST**  
**Two Halves**  
— Moloney Architects

0403 741 292  
mick@moloneyarchitects.com.au  
www.moloneyarchitects.com.au



PHOTO: Tom Blachford & Kate Ballis

**3 TOWNHOUSES IN BALMAIN | COMPACT. CONTEXTUAL. UNIQUE. SUSTAINABLE.**  
— Terence Yong Architecture

02 8399 1383  
ywshun@gmail.com  
www.terenceyongarchitecture.com



PHOTO: Terence Yong

**FINALIST**  
**South Melbourne Beach House**  
— Topology Studio

03 8648 7523  
topologystudio@outlook.com  
www.topologystudio.com.au



PHOTO: Paul Hermes

**Alphington Townhouses**  
— Green Sheep Collective

03 9020 3444  
shae@greensheepcollective.com.au  
www.greensheepcollective.com.au



PHOTO: Emma Cross

**2A Concrete**  
— Shane Denman Architects

0407 943 731  
shane@denmandesigns.com  
www.shanedenmanarchitects.com



PHOTO: Scott Burrows

**Courtyard House**  
— FIGR Architecture Studio

0400 212 833  
michael@figr.com.au  
www.figr.com.au



PHOTO: Tom Blachford

**Habitat on Terrace**  
— REFRESH\*DESIGN

0404 326 862  
studio@refreshdesign.com.au  
www.refreshdesign.com.au



PHOTO: Christopher Frederick Jones, Roger D'Souza

**Living Screen House**  
— CplusC Architectural  
Workshop

02 9690 2211  
imogen@cplusc.com.au  
www.cplusc.com.au



PHOTO: Murray Fredericks, Michael Lassman, Jem Cresswell

**House on Guido**  
— Shane Denman  
Architects

0407 943 731  
shane@denmandesigns.com  
www.shanedenmanarchitects.com



PHOTO: Statik Illusions

**Lygon**  
— Foomann Architects

0408 546 470  
jamie@foomann.com.au  
www.foomann.com.au



PHOTO: Willem Dirk du Toit

**Java2**  
— Shane Denman  
Architects

0407 943 731  
shane@denmandesigns.com  
www.shanedenmanarchitects.com



PHOTO: Remco Photography

**Martha Cove**  
— Dan Webster  
Architecture

03 8560 6590  
dan@dwarchitecture.com.au  
www.dwarchitecture.com.au



PHOTO: Dean Bradley

**Mount Macedon House**  
— Field Office  
Architecture

0401 049 053  
chris@fieldoffice.com.au  
www.fieldoffice.com.au



PHOTO: Dan Farrar

**Ramp House**  
— Irons McDuff  
Architecture

03 5258 2546  
kim@ironsmcduff.com.au  
www.ironsmcduff.com.au

**SUSTAINABILITY  
MEDAL  
COMMENDATION**



PHOTO: Nic Granleese

**Northcote Solar Home**  
— Green Sheep  
Collective

03 9020 3444  
shae@greensheepcollective.com.au  
www.greensheepcollective.com.au



PHOTO: Emma Cross

**Richmond Hill**  
— Melbourne Design  
Studios (MDS)

1300 850 670  
Marc@MelbourneDesignStudios.com.au  
www.melbournedesigstudios.com.au



PHOTO: Peter Clarke Photography

**Philip Island  
Beach House**  
— Project 12  
Architecture

0477 029 902  
lg@project12architecture.com  
www.project12architecture.com



PHOTO: Glenn Hester

**Roof House**  
— BOARCH

0423 878 854  
christina@boarch.com.au  
www.boarch.com.au



PHOTO: Emma Cross



**Roses Gap House**  
— Field Office of  
Architecture

0401 049 053  
chris@fieldoffice.com.au  
www.fieldoffice.com.au



**Somme**  
— Jarchitecture

0432 522 960  
jorja@jarchitecture.com.au  
www.jarchitecture.com.au



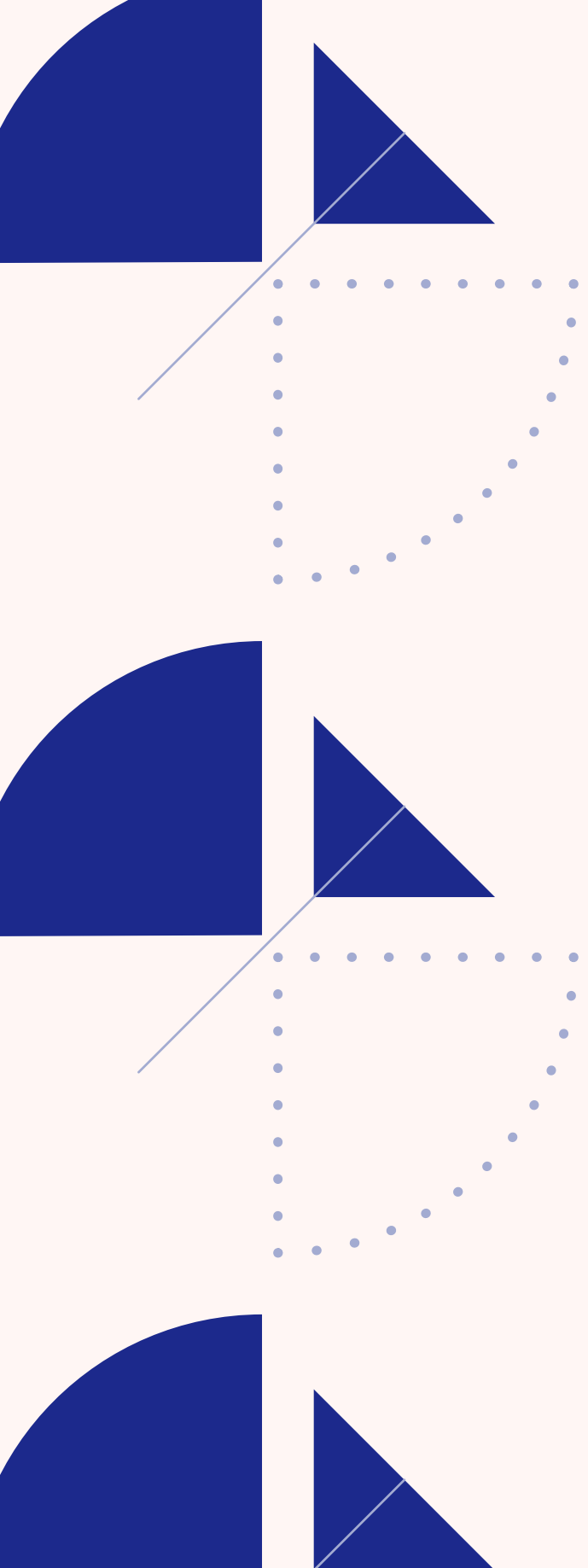
# NULOK ROOFING AD



# — Residential Alterations

**Sponsored by  
Aussie Gutter Protection**

This category awards the best overall design and architecture of an alteration or addition to a built private home, an individual apartment or multi-unit residential unit.



**WINNER**  
**Light Corridor House** — FIGR Architecture Studio



PHOTO: Tom Blachford

03 9913 9396  
 michael@figr.com.au  
 www.figr.com.au

**— Design intent**

Light Corridor House is an extension which celebrates the journey through the old to the new. Upon arrival, the property presents itself as a familiar Victorian worker’s cottage. The heritage façade has been restored to its former glory, and careful consideration has been given to retaining and celebrating the period features in the original part of the property. As visitors move down the typical Victorian gun barrel corridor, they arrive at a doubleheight spotted gum tunnel which is the beginning of the journey from old to new.

This tunnel conceals the laundry and main bathroom, creating a seamless transition. As visitors exit the darkness of the tunnel, the experience of moving into the new addition is dramatic in both texture and atmosphere. The highlight window is immediately apparent and is a key element of the light corridor house. An intimate living room, which is expressed through contrasting material change and a light portal, transitions into the kitchen. From here, there is a direct link to the outside verandah area which is surrounded by foliage – creating the sense of a private oasis in the busy urban setting of Cremorne.

**— Judges Comments**

Light Corridor House has excelled against the odds of a modest budget and the constraints of a tight heritage site in Cremorne. The use of light and the double height ceiling provides a sense of openness and delineates between the original worker’s cottage and the new extension. The judges commend FIGR for smart planning that creates a sense of openness and connection to the garden without losing separation of space – an important factor for a growing family. Light Corridor House includes a creative use of standard materials such as cement sheet and contrasting timbers, without compromising the sense of intimacy and warmth of the original heritage cottage. The project is an excellent example of how smart design can provide a sense of more for less; Light Corridor House illustrates that a beautifully detailed and generous home can be realised on a modest budget and site.



COMMENDATION  
**Elgin Street Residence**  
— Sonelo Design Studio

02 9690 2211  
wilsontang@sonelo.com.au  
www.sonelo.com.au



COMMENDATION  
**PerfPad**  
— Northbourne Architecture + Design

03 9999 7970  
sally@northbourne.co  
www.northbourne.co



COMMENDATION

**Ballantyne**

— Foomann Architects

0408 546 470  
jamie@foomann.com.au  
www.foomann.com.au



SUSTAINABILITY  
MEDAL  
COMMENDATION



PHOTO: Willem-Dirk du Toit

FINALIST

**Valiant House**

— A for Architecture

0438 441 812  
anna@forarchitecture.com.au  
www.aforarchitecture.com.au



PHOTO: Peter Bennetts

FINALIST

**Cairo Studio**

— Nicholas Agius  
Architects

0413 311 539  
na@narch.com.au  
www.narch.com.au



PHOTO: Rubin Utama

FINALIST

**Joyful House**

— Mihaly Slocombe

03 9080 2238  
info@mihalyslocombe.com.au  
www.mihalyslocombe.com.au



PHOTO: Tatjana Plitt

**FINALIST**  
**Fifty Fifty**  
— Architecture  
Architecture

03 9417 0995  
xn@archarch.com.au  
www.architecturearchitecture.com.au



PHOTO: Derek Swalwell

**Albert Park House**  
— Hindley & Co

03 9328 4440  
anne@hindleyandco.com.au  
www.hindleyandco.com.au



PHOTO: Shannon McGrath

**'Blue and Green**  
**Should Never Be Seen...'**  
**Yarrville House**  
— Perversi-Brooks  
Architects

0421 850 818  
perversibrooks@gmail.com  
www.perversi-brooks.com



PHOTO: Michael Kai

**ALToNa ALTeration**  
— OMG Architects

0479 147 467  
matt@omgarchitects.com.au  
www.omgarchitects.com.au



PHOTO: Ben Hosking

**27 50 PENT-PLAYHOUSE**  
— LAXSTUDIOS

03 9662 9375  
llau@laxstudios.com  
www.laxstudios.com



PHOTO: LAXSTUDIOS/COLOURFIELD VISION

**BIG.SHED.HOUSE**  
— Perversi-Brooks  
Architects

0421 850 818  
perversibrooks@gmail.com http://  
www.perversi-brooks.com



PHOTO: Tom Ross of Brilliant Creek

**Brunswick Californian**  
— Jos Tan Architects

0403 608 627  
office@jos.net.au  
www.jos.net.au



PHOTO: Tom Ross

**Casa Famiglia**  
— BOARCH

0423 878 854  
christina@boarch.com.au  
www.boarch.com.au



PHOTO: Emma Cross

**Burrawong House**  
— Bijl Architecture

02 9958 7950  
lah@bijlarchitecture.com.au  
www.bijlarchitecture.com.au



PHOTO: Katherine Lu

**Clerestory House**  
— Lai Cheong Brown

03 9347 6557  
rowan@laicheongbrown.com  
www.laicheongbrown.com



PHOTO: Jaime Diaz Berrio

**Carlton Terrace**  
— WINDUST  
ARCHITECTS x  
INTERIORS

0407 800 702  
info@windust.com.au  
www.windust.com.au



PHOTO: Michael Kai

**Clovelly House II**  
— Madeleine Blanchfield  
Architects

03 9212 3343  
office@madeleineblanchfield.com  
www.madeleineblanchfield.com



PHOTO: Prue Ruscoe

**Crisp House,  
Collingwood**  
— Robert Nichol & sons

0407 308 116  
brett@robertnicholandsons.com.au  
www.robertnicholandsons.com.au



PHOTO: Jack Lovel

**Dixon Chambers**  
— rosstang ARCHITECTS

0422 906 734  
rosstang@internode.on.net  
www.rosstang.com.au



PHOTO: Tatjana Plitt

**Curtain Cottage**  
— Apparte Studio

0421 569 983  
info@appartestudio.com.au  
www.appartestudio.com.au

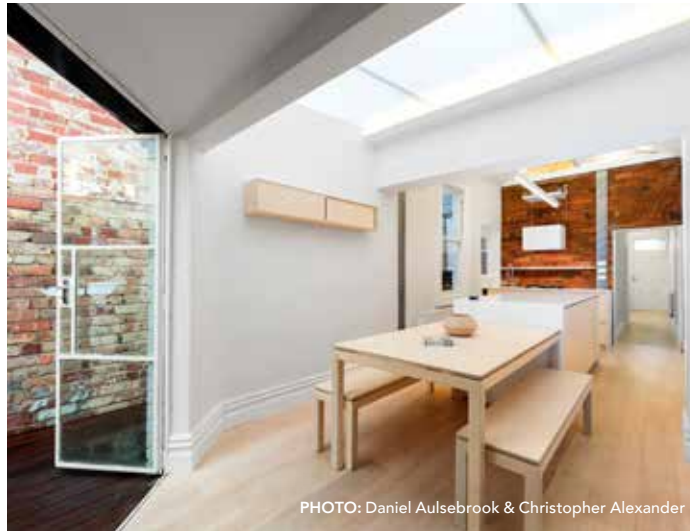


PHOTO: Daniel Aulsebrook & Christopher Alexander

**Edwardian Thong**  
— Statkus Architecture

03 9482 2201  
ben@statarch.com.au  
www.statkusarchitecture.com.au



PHOTO: Nic Granleese & Marie Muggivan

**Curvy house**  
— Ben Callery Architects

0402 833 422  
ben@bencallery.com.au  
www.bencallery.com.au



PHOTO: Tatjana Plitt

**Elgin House**  
— Bryant Alsop

03 9815 0167  
stephanie@bryantalsop.com.au  
www.bryantalsop.com.au



PHOTO: Jack Lovel



**Fitzroy North House**  
— Winter Architecture  
Pty Ltd

0401 041 754  
jean@winterarchitecture.com.au  
www.winterarchitecture.com.au



**Gestalt Northcote**  
— Statkus Architecture

03 9482 2201  
ben@statarch.com.au  
www.statkusarchitecture.com.au



**Gable House**  
— Sheri Haby Architects

0407 806 374  
studio@sherihiby.com  
www.sherihiby.com



**Glide House**  
— Ben Callery Architects

0402 833 422  
ben@bencallery.com.au  
www.bencallery.com.au



**Garden Wall House**  
— Sarah Kahn Architect

0429 053 286  
sarahkahn.architect@gmail.com



**Grasmere**  
— Bryant Alsop

03 9815 0167  
stephanie@bryantalsop.com.au  
www.bryantalsop.com.au







**Home Sweet Home**  
— Michelle Grey

0419 301 542  
mihellegrey@optusnet.com.au



PHOTO: Tatjana Plitt

**LongRoom House**  
— OOF! architecture

0415 497 815  
us@oof.net.au  
www.oof.net.au



PHOTO: Nic Granleese

**jigsaw house**  
— mcmahon and nerlich

0400 560 878  
rob@manarchitects.com.au  
www.manarchitects.com.au



PHOTO: Lisbeth Grosmann

**Mexican Swiss Chalet –  
Malmsbury House**  
— Perversi-Brooks  
Architects

0421 850 818  
perversibrooks@gmail.com  
www.perversi-brooks.com



PHOTO: Ben Hosking Architectural Photography

**Jill's House**  
— Green Sheep  
Collective

03 9020 3444  
shae@greensheepcollective.com.au  
www.greensheepcollective.com.au



PHOTO: Emma Cross

**Miller Renovations**  
— Renjie Teoh Architect  
Pty Ltd

02 9380 6158  
renjie@rjarchitect.space  
www.rjarchitect.space



PHOTO: Ryan Linnegar



**Newtown House**  
— Hindley & Co

03 9328 4440  
anne@hindleyandco.com.au  
www.hindleyandco.com.au



PHOTO: Tatjana Plitt

**Park House**  
— Bryant Alsop

03 9815 0167  
stephanie@bryantalsop.com.au  
www.bryantalsop.com.au



PHOTO: Rhiannon Slatter

**Oak House**  
— Bryant Alsop

03 9815 0167  
stephanie@bryantalsop.com.au  
www.bryantalsop.com.au



PHOTO: Jack Lovel

**Patch House |  
Mount Eliza**  
— YSC Architects

0424 156 086  
hello@yscarchitects.com.au  
www.yscarchitects.com.au



PHOTO: YSC Architects

**Open House**  
— MODO Architecture

0437 879 833  
michael@mo-do.net  
www.mo-do.net



PHOTO: MODO Architecture

**Peregian Beach House**  
— Marnie Whittaker  
Architect

0421 794 710  
whittakermarnie@gmail.com  
www.marniewhittakerarchitect.com.au



PHOTO: Richard Donelly

**Playtime**  
— Guild Architects

0423 714 729  
penny@guildarchitects.com.au  
www.guildarchitects.com.au



PHOTO: Jack Lovel

**Queens Park House**  
— Madeleine Blanchfield Architects

02 9212 3343  
office@madeleineblanchfield.com  
www.madeleineblanchfield.com



PHOTO: Prue Ruscoe & Robert Walsh

**Pond House  
"Marrandillas"**  
— Nic Owen Architects

03 9381 1481  
info@nicowenarchitects.com.au  
www.nicowenarchitects.com.au



PHOTO: Christine Francis

**Ruffey Lake House**  
— Inbetween Architecture

0413 006 393  
john@inbetweenarchitecture.com.au  
www.inbetweenarchitecture.com.au



PHOTO: Tatjana Plitt

**Port Melbourne House**  
— Winter Architecture Pty Ltd

0401 041 754  
jean@winterarchitecture.com.au  
www.winterarchitecture.com.au



PHOTO: Nicole England

**Sandringham House**  
— Broad Architecture Pty Ltd

0421 217 662  
rob@broadarchitecture.com.au  
www.broadarchitecture.com.au



PHOTO: Greta Costello Photography



**Screen House**  
— Warc Studio

0410 028 759  
awilson@warc.com.au  
www.warc.com.au

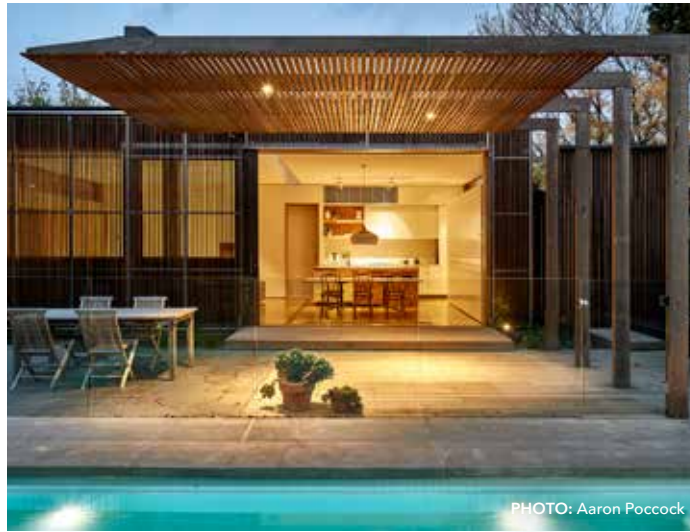


PHOTO: Aaron Poccock

**St Kilda West Residence**  
— Ewert Leaf

03 9686 2100  
rburke@ewertleaf.com.au  
www.ewertleaf.com.au



PHOTO: Derek Swalwell

**Smart Home**  
— Green Sheep  
Collective

03 9020 3444  
shae@greensheepcollective.com.au  
www.greensheepcollective.com.au



PHOTO: Emma Cross

**Stealth House**  
— Mark Lam Architect

0422 788 008  
mhclam@yahoo.com.au  
www.mhclam.wixsite.com/ml-architect



PHOTO: Mark Lam

**Soudan House**  
— Richard Kerr  
Architecture Pty Ltd

0419 308 800  
rk@rkarch.com.au  
www.rkarch.com.au



PHOTO: Glen Anderson

**The Barkly**  
— VThree Architecture

0409 687 652  
vicky@vthreearchitecture.com.au  
www.vthreearchitecture.com.au



PHOTO: Grandview Photography





**The Skin Job**  
— Architecture  
Architecture

03 9417 0995  
xn@archarch.com.au  
www.architecturearchitecture.com.au



**Upside Down House**  
— Inbetween  
Architecture

0413 006 393  
john@inbetweenarchitecture.com.au  
www.inbetweenarchitecture.com.au



**Thornbury House**  
— Olaver Architecture

0422 627 071  
eo@olaver.com.au  
www.olaver.com.au



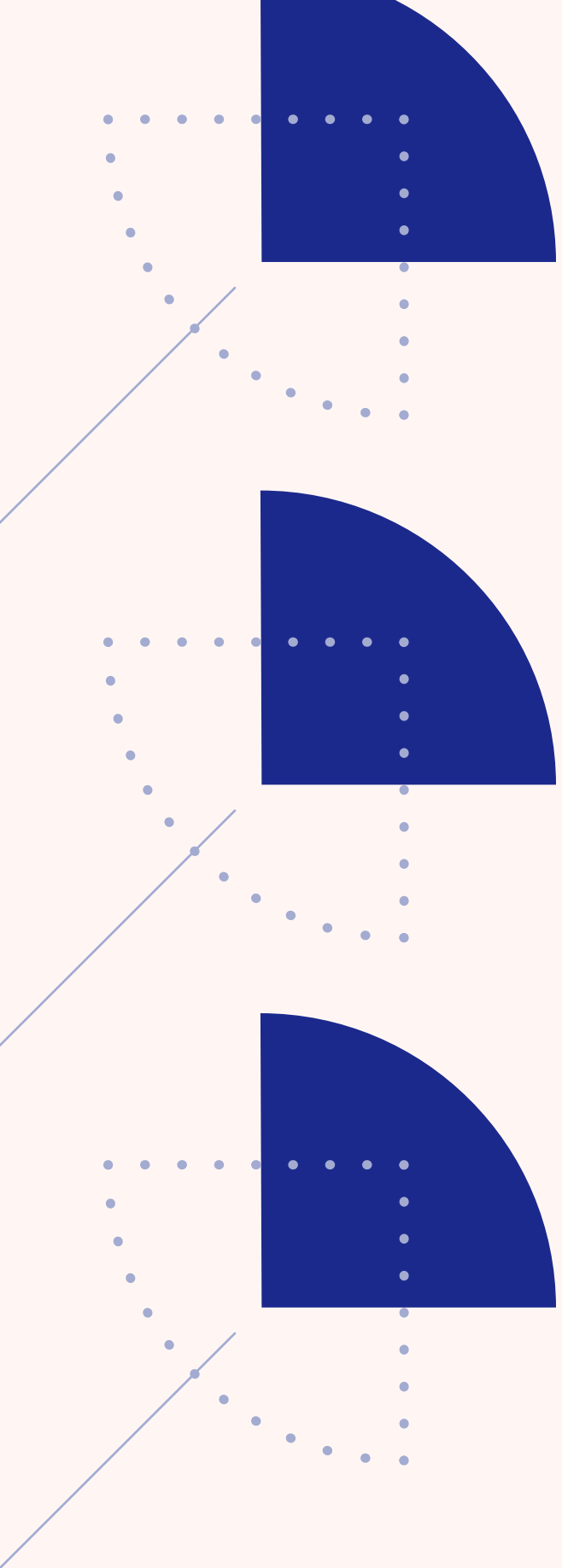
**SMALL  
PROJECT MEDAL  
COMMENDATION**

**Together Apart**  
— Architecture  
Architecture

03 9417 0995  
xn@archarch.com.au  
www.architecturearchitecture.com.au



**BOWERBIRD AD**



WINNER

Workshop Bros Glen Waverley — Studio Esteta



PHOTO: Tessa Ross-Phelan

03 9428 0228  
 studio@studioesteta.com.au  
 www.studioesteta.com.au

— Design intent

Workshop Brothers Glen Waverley transforms a dilapidated eatery into a Chinese inspired all day café and restaurant. The Client's brief was to create a dining experience that could seamlessly transition from day to night with a design language that personified the contemporary Asian menu.

The design response draws upon and celebrates the Chinese heritage of our Clients and the playful clichés and nostalgic memories of retro Chinese eateries.

The traditional and significant meaning of the circle in Chinese culture became a reoccurring theme in the design approach. Rich in meaning

and symbolism, the circle represents oneness, perfection and unity.

The light palette consisting of pink hues with highlighted plum and brass accents maintains a level of sophistication whilst allowing an ease of transition of the venue from café to restaurant. Custom light fixtures were designed by Studio Esteta, to further accentuate the retro playfulness of the design.

The idea of family, heritage and food uniting the two is reflected through the design, in particular through a series of circular ply openings that divide the elongated space into dining, bar and B.O.H zones. The openings create a gradual unravelling of the design, framed

views and draws focus to the heart of the design, the central communal table, that in action reflects unity; the unity of people through food.

The layout enables a fluid and seamless spatial flow for staff and patrons. Patrons are welcomed by a maitre d' station that defines a holding zone, this and the central cake display and waiter's station encase the general dining zone.

To manage budgetary constraints the existing kitchen was retained with the new bar and kitchen pass positioned adjacent, enabling a central service zone.

Workshop Brothers advances contemporary hospitality design practice as it demonstrates a holistic approach to programmatic requirements partnered with an aesthetic approach that inherits nostalgic Chinese tradition and showcasing its stylistic significance, in a refined and meaningful resolution.

Opposed to an unnecessarily overembellished approach, the design response is simple, refined but rich and layered with conceptual rationale that challenges past perceptions of the retro Chinese restaurant. Circular symbolism was accentuated through detailing and intricate joinery details. Elements previously perceived ugly have been embraced and reinvigorated, vinyl clad chairs, chunky granite – like marbles, glossy surfaces, pink textures and plum and brass accents.

In essence aesthetics and functionality are addressed simultaneously to create a space that is timeless and in turn a sustainable design outcome.

— Judges Comments

This immediately striking project punches above its weight. Located in bustling Glen Waverley it is a sophisticated interpretation of the archetypal suburban Asian restaurant.



The circular motif of the plywood arches that divide the space and frame the views of each section immediately remind the visitor of the circular windows of Chinese restaurants across the suburbs and country towns. These arches are the backdrop to a crafted interior where the hands of the designers can be seen in all aspects of the fitout.

Elements previously perceived as ugly have been celebrated and reinvigorated. Light fittings, tables and banquettes have all been customised for the project, feature

mirrors and signage continue the layering. The soft peach of the walls is complemented by plum banquettes with mint cushions and highlights of stone.

It feels like Scarpa has been an inspiration, with each element designed as an object contributing to the whole. Esteta are a practice that understands the importance of the big gesture and the pleasure of the detail. This is a beautiful project that continues the practices impressive body of work.

COMMENDATION

**Cubby office**

— Krisna Cheung Architects Pty Ltd

0413 336 828  
recheung@iprimus.com.au  
www.krisnacheungarchitects.com.au



PHOTO: Nic Granleese

COMMENDATION

**Primo**

— Olaver Architecture

03 9417 5882  
eo@olaver.com.au  
www.olaver.com.au



PHOTO: Ben Clement



**FINALIST**  
**Norton Legal**  
— Dreamer

0439 039 055  
ben@dreamerlab.com.au  
www.dreamerlab.com.au



PHOTO: Benjamin Shields

**Astra Ski Lodge**  
— Grant Amon  
Architects P/L

03 9593 9944  
info@grantamon.com  
www.grantamon.com



PHOTO: Peter Bennetts

**SUSTAINABILITY  
MEDAL**  
COMMENDATION

**FINALIST**  
**Barre Body**  
— Mihaly Slocombe

03 9080 2238  
info@mihalyslocombe.com.au  
www.mihalyslocombe.com.au



PHOTO: Tatjana Plitt

**Fleetwood Office**  
— Studio Esteta

03 9428 0228  
studio@studioesteta.com.au  
www.studioesteta.com.au



PHOTO: Sarah Anderson

**388 elizabeth**  
— mcmahon and nerlich

0401 029 381  
kate@manarchitects.com.au  
www.manarchitects.com.au



PHOTO: Gallant Lee and superk.photo (varies)

**Jesson Tan**  
— Tan Architects P/L

0412 622 059  
jtan@tanarch.com.au  
www.tanarch.com.au



PHOTO: Luois Lau

**KLANG & CO**  
**Asian Food Depot**  
— PNEU ARCHITECTS

0450 068 606  
kiet.chew@pneuarch.com.au  
www.pneuarch.com.au



PHOTO: Jack Lovel

**Nike Sydney Sales Office**  
— Project 12  
Architecture

0477 029 902  
lg@project12architecture.com  
www.project12architecture.com



PHOTO: Tyrone Branigan Productions

**KX CBD**  
— LOKE ARCHITECTS

0412 338 131  
caroline@lokearchitects.com.au  
www.instagram.com/lokearchitects



PHOTO: Mary Grekos

**PleatPod**  
— ZILKA Studio

0400 627 845  
lz@zilkastudio.com.au  
www.zilkastudio.com.au



PHOTO: John Gollings

**Neptune Food and Wine**  
— Ewert Leaf

03 9686 2100  
rburke@ewertleaf.com.au  
www.ewertleaf.com.au



PHOTO: Fiona Storey

**Sovereign Radiology**  
— peter vernon  
architects

03 9329 0392  
peterpva@bigpond.com  
www.vernon.net.au



PHOTO: Greg Elms, Chantelle McKinley, Peter Vernon



**The Sonic**  
— Studio Esteta

03 9428 0228  
studio@studioesteta.com.au  
www.studioesteta.com.au



**Three Red Stripes Restaurant**  
— Pham Tuan  
Viet Architects

0434 971 496  
ptvarchitects@gmail.com  
www.phamtuanviet.com



**Victoria University  
"Hacker Space"**  
— Ed Ewers Architecture

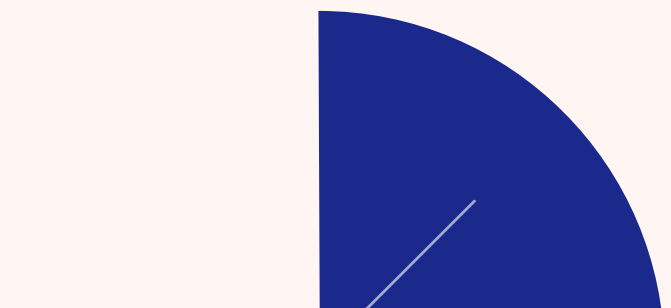
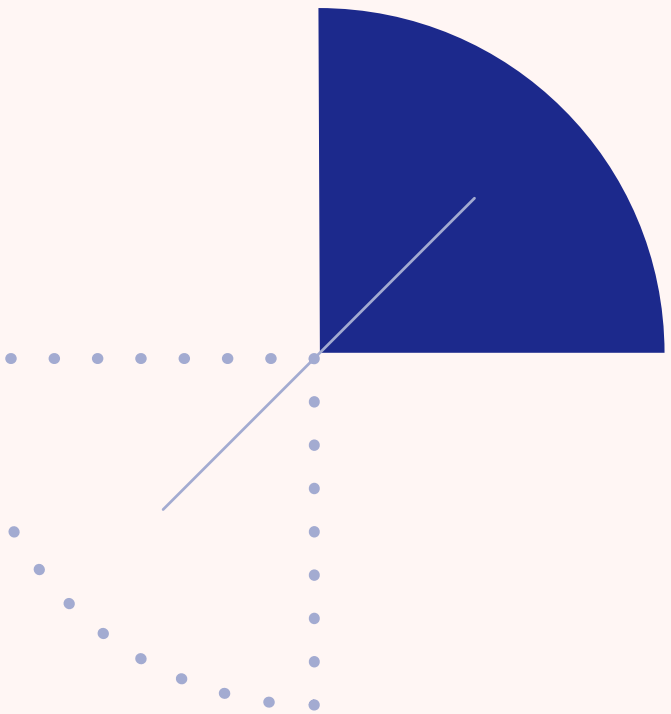
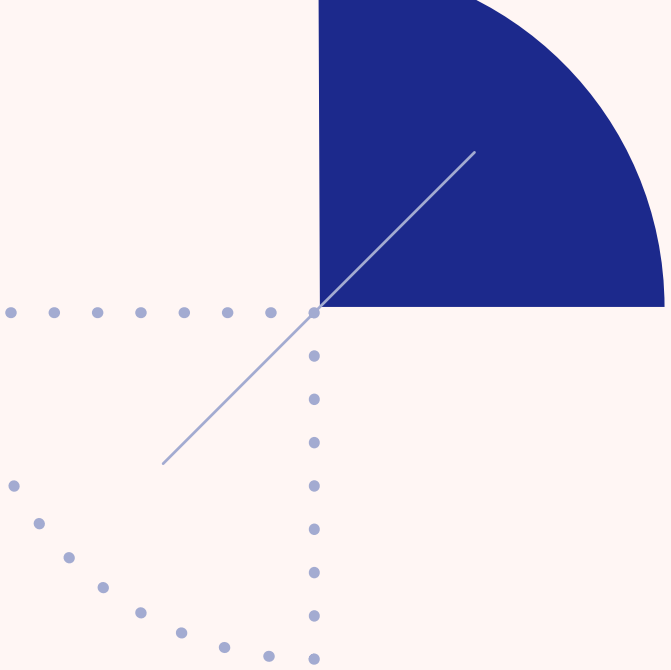
0449 707 397  
aaron@ewersarchitecture.com.au  
www.ewersarchitecture.com.au



# SUPADUPA AD

# — Community

Due to the lack of entries in this category, no award has been given this year.





**Melbourne  
Quaker Center**  
— Peter Hogg and  
Toby Reed Architects

0400 784 779  
ph@pharchitects.com.au  
www.pharchitects.com.au

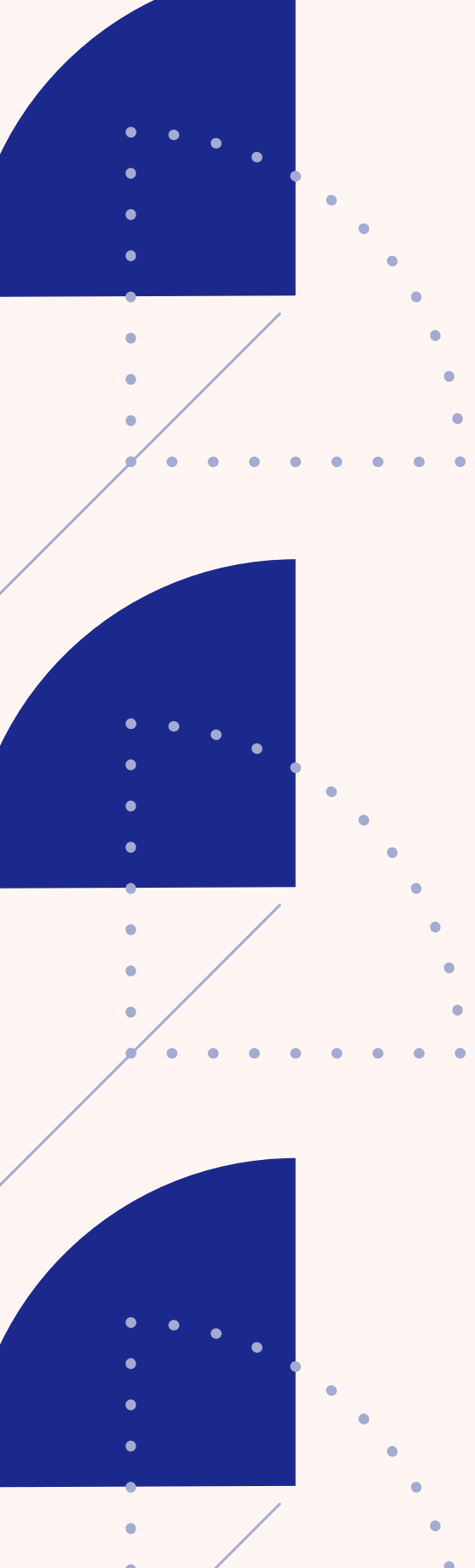


## AUSSIE GUTTER PROTECTION AD

**Richmond Lighting**

www.richmondlighting.com.au

# — Contribution



## WINNER

## Panfilo — Warwick Mihaly



PHOTO: Tom Blachford

03 9080 2238  
 info@mihalyslocombe.com.au  
 www.mihalyslocombe.com.au

## — Design intent

Panfilo is a blog about the culture, practice and business of architecture.

Warwick has been filling Panfilo with words since 2010, a year that he and his wife, Erica, spent living in Italy and travelling the world. It was an exceptionally rich experience filled with travel, language, architecture and of course pasta. And somewhere between Palermo and Venice, he discovered a passion for writing. Warwick's life was a relentless stream of engaging, inspiring and remarkable events, and he had the itch to capture the things he learned on paper. So he started Panfilo, and named it after the street where he and Erica lived in inner-city Milan.

It helped him bring his intense curiosity for travel back home to Melbourne.

At first, Warwick wrote about everything – architecture in abundance, but cinema, theatre, literature and the environment too. Then when he and Erica started their architecture studio and a family (in dizzyingly quick succession), his world contracted and his writing inevitably narrowed in its focus. Warwick wrote more and more about his experiences running Mihaly Slocombe, with the hope that his hard-earned lessons might be of value to other architects following the same path.

As Panfilo's subject material narrowed, Warwick found the opportunity to deepen it too. Importantly, this is where he found his voice, and an enduring identity within the broader architectural community. Warwick now writes about clients, marketing, work/life balance, advocacy, profitability, tendering, the design process, business systems and everything else an architect must face. His writing is a catharsis that encourages him to dig below the surface of issues facing his practice, and tease out hidden truths. He believes that good design and good business are inseparable halves of a whole, that one can't exist without the other.

Panfilo has thus evolved into a story about starting and growing a successful architecture studio. It has charted the trajectory of Mihaly Slocombe from just Warwick and Erica in their spare bedroom to six passionate architects and graduates in a thriving coworking space. It has established a real-time narrative about architecture, family, creativity, leadership and business, and stoked Warwick's curiosity about the world around him. It has allowed him to analyse his and Erica's successes (and sometimes failures), and carefully articulate their business aspirations and vision for the future.

## TO DATE, WARWICK HAS:

Published **323 ARTICLES**  
 Received **646 COMMENTS**  
 Accumulated **1,558 SUBSCRIBERS**  
 And been visited by **90,987** people  
 a total of **222,171** times

The development of Warwick's voice within Panfilo has come at an opportune time. There's an emerging change in the winds of the architecture profession, and a growing interest in the business of architecture.

Warwick's writing has established him as a thought leader in advocacy and architecture practice. It has allowed him to explore with great detail the workings of an architectural business, and share these insights. He has developed a reputation for transforming complex information into surprisingly readable long-form essays. He has also discovered a knack for a mean infographic, and uses these to provide visual support to the ups and downs of finances, project pipelines and profit.

Writing for Panfilo has led Warwick to invitations to present his experiences to a diverse range of audiences, from small business owners and Rotary Club members, to Masters students at the University of Melbourne and members of the NSW Chapter of the AIA. It has led to podcasts with Flying Solo, Coming Up Next and Vanity Projects, all exploring the intersection of design and business. He has had essays co-published with ArchiTeam, Interns Australia and the ARBV. And he has been commissioned to write for Architecture Australia, ArchitectureAU, Parlour and ArchiTeam among others, including official coverage of the 2014 AIA Making conference.

Panfilo's audience has helped Warwick form a strong network of like-minded architects around Australia. Through this considerable reach, he engages meaningfully in the architecture community's awakening awareness that good design and good business go hand in hand. He uses his experience in running a successful architecture studio to share valuable insights with colleagues, graduates and students.

## — Judges Comments

Warwick is a tireless dude, Panfilo is a fearless journalism. Promote, advocate and provoke, are the words that comes to mind when we talk about how Panfilo has contributed to the architecture industry in our generation. 323 articles in 7 years, that's 46 a year, 4 a month, 1 a week, the dude's brain doesn't stop, and he still has to work, sleep, skateboard and be a dad!

The subheading of Panfilo is 'The culture, practice and business of architecture', his independent and altruistic way of sharing his views, findings and experiences, has benefited and inspired many emerging architects, as well as experienced architects, where the many institutions have failed to deliver this level of help and support.

Panfilo is open source, all for sharing, all for love, all for architecture. If we are to go back 20 years ago, at the time Googling started, and if Warwick was writing, many architects and practices would not have to find themselves trying so much of the trial and error in establishing their businesses.

Warwick, thanks for your tireless love of our profession, and also thank you Erica Slocombe for her tireless support. Congratulations.



## Hipsters join the westside tribe

— Redmond Hamlett

03 9534 0299  
redmond@woollanhamlett.com.au  
www.woollanhamlett.com.au



“Hipsters join the westside tribe” was an essay published in Urban Melbourne on January 17th 2017. This piece was written in response to a series of public vandalism on new hospitality businesses in Footscray. It was intended to highlight the demise of civic literacy in the urban realm that is happening to former working-class inner city suburbs that are experiencing high levels of gentrification. It also questions what role local government should be playing to both support new businesses to revitalise their

commercial precincts but also support those on the social fringes who might otherwise be pushed away from places like Footscray. Stronger community cohesion is the result of considered design decisions in the wider urban realm by offering amenity and safe places to gather in public, and this needs to be taken seriously by local governments rather than having a punitive approach that affects the most vulnerable members of the community

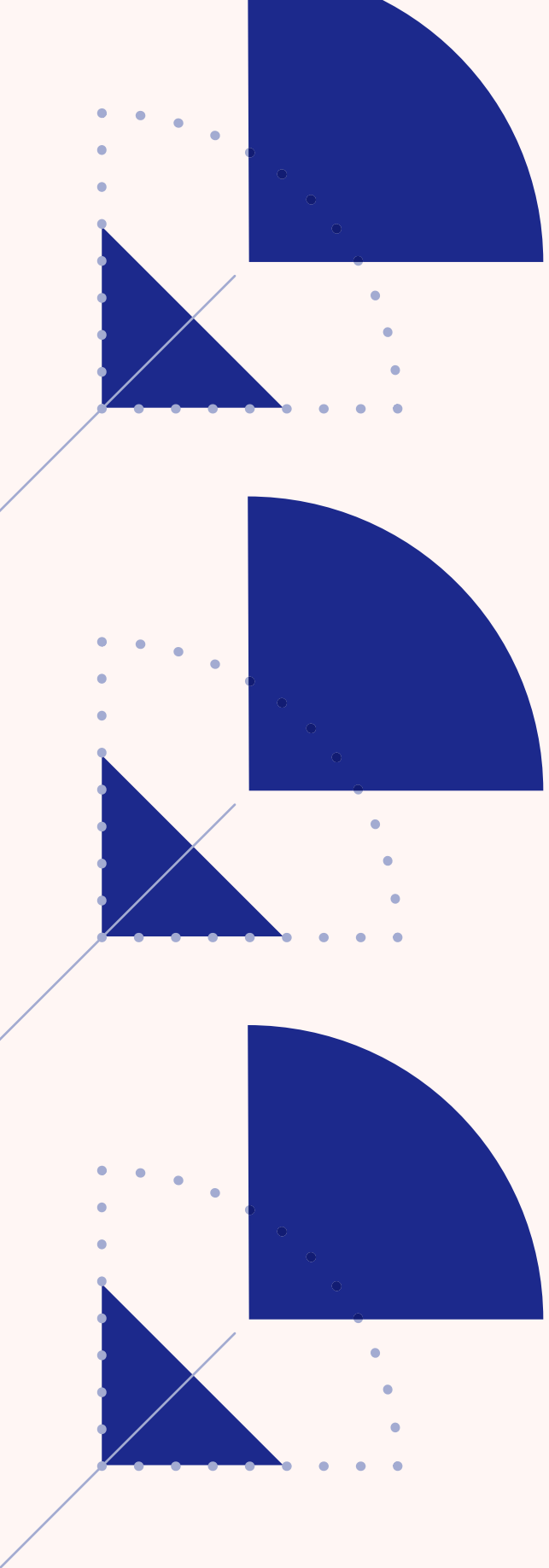
## BAMBRA AD

## CELESTE NJOO AD



The other 2 shortlisted entries, Broken Hill Solar Farm Viewing Platform and Urban Renaissance Atherton Gardens also displayed commendable propositions amongst the field of submissions.

The unbuilt category received 22 diverse submissions across a wide variety of subject matter, scale and substance. Whilst no Award was given for overall outstanding work, a Commendation was awarded to Nervegna Reed Architecture for the 30KM Masterplan for Dazhou in China. The linear park proposal promoted a dynamic solution to a range of new activities and connections along the river and was commended for its breadth of vision and scale of undertaking.



COMMENDATION

**30km Master Plan for Dazhou**

— Nervegna Reed Architecture

0400 978 880  
toby@n-r.com.au  
www.nervegna-reed.com.au



FINALIST

**Urban Renaissance  
– Atherton Gardens  
Re – Commission**

— Elvin Tan

0430 017 762  
elvin@elvintan.com.au  
www.elvintan.com.au

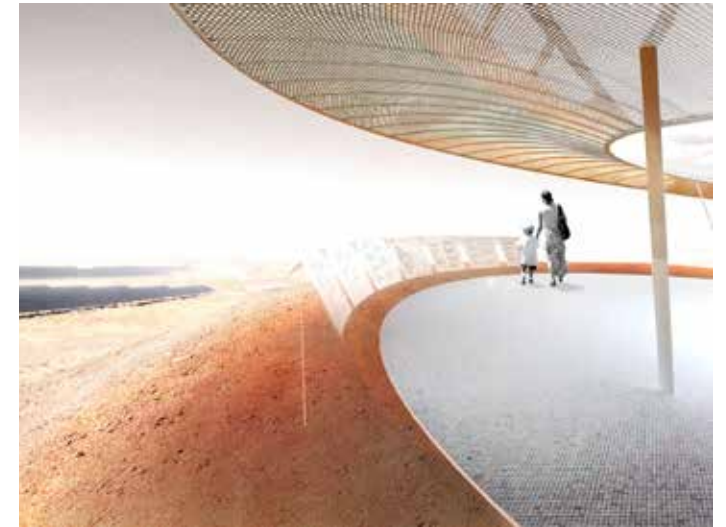


FINALIST

**Broken Hill Solar  
Farm Viewing Platform**

— OSK Architects

0425 743 446  
ben.waters00@gmail.com  
www.oskarchitects.org



**45 Orrong Road**

— Ewert Leaf

03 9686 2100  
rburke@ewertleaf.com.au  
www.ewertleaf.com.au



**Bayview**

— Madeleine Blanchfield Architects

02 9212 3343  
office@madeleineblanchfield.com  
www.madeleineblanchfield.com



**City of Light and Dark**

— Hindley & Co

03 9328 4440  
anne@hindleyandco.com.au  
www.hindleyandco.com.au/



**Cappy's House**

— kuhnellco architecture

0402 081 227  
peter@kuhnellco.com.au  
www.kuhnellco.com.au



**ecoSANCTUARY**

| Golden Beach  
— YSC ARCHITECTS

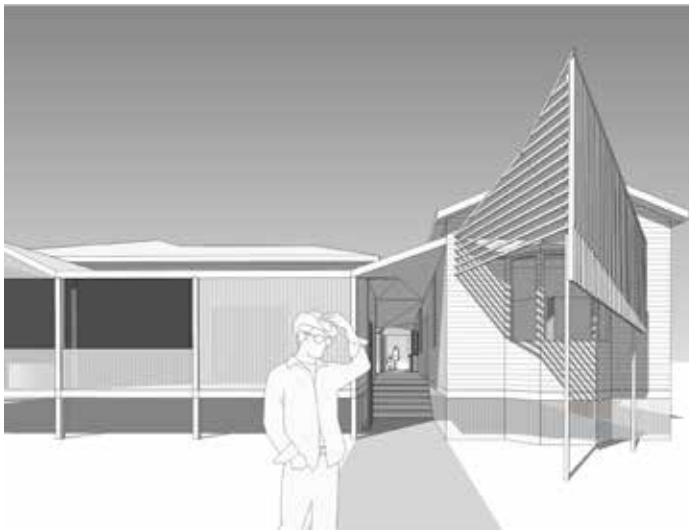
0424 156 086  
hello@yscarchitects.com.au  
www.yscarchitects.com.au



**Chestnuts**

— Architecture Koen

0488 551 020  
dan@koen.com.au  
www.koen.com.au



**Endless Summer**

— Atelier Red+Black

0404 977 175  
atelier@redblackarch.com.au  
www.redblackarch.com.au/



## Ewingsdale Residence

— DavidovPartners  
Architects

03 9429 8545  
robert@davidov.com.au  
www.davidov.com.au



## Gasworks Arts Park – Courtyard Refresh

— Woollan Hamlett  
Architects Pty Ltd

03 9534 0299  
redmond@woollanhamlett.com.au  
www.woollanhamlett.com.au



## HashtagHouse

— NORTHBOURNE  
ARCHITECTURE +  
DESIGN

03 9999 7970  
sally@northbourne.co  
www.northbourne.co



## IN THE ROUND – BAUHAUS MUSEUM DESSAU

— Perversi-Brooks  
Architects

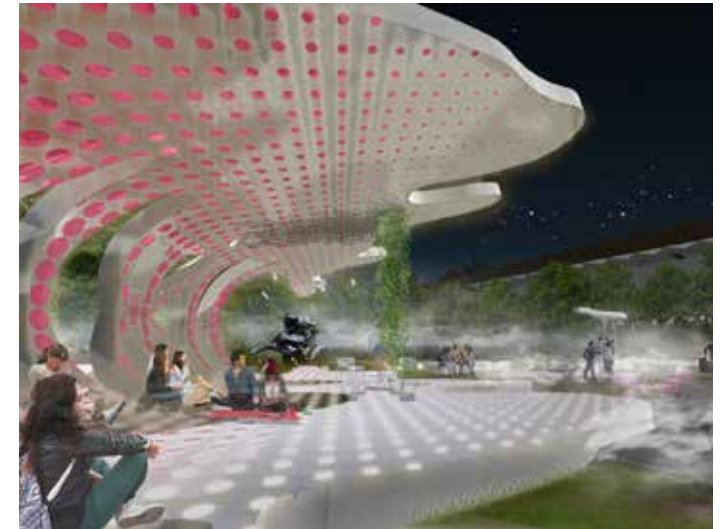
0421 850 818  
perversibrooks@gmail.com  
www.perversi-brooks.com



## NGV Splatter Pavilion

— Nervegna Reed  
Architecture

0409 788 804  
anna@n-r.com.au  
www.nervegna-reed.com.au



## Phillip Island Beach House

— RNAI Architects

0419 004 540  
rod@rodneil.com  
www.rnarch.com



**Port Melbourne  
mixed use**

— Justin Mallia  
Architecture

0409 536 023  
info@justinmallia.com  
www.justinmallia.com



**Solar Flip**

— Steffen Welsch  
Architects Pty Ltd

03 9988 9411  
sw@steffenwelsch.com.au  
www.steffenwelsch.com.au



**The Drift**

— Architecture  
Architecture

03 9417 0995  
xn@archarch.com.au  
www.architecturearchitecture.com.au



**the melody house**

— mcMahon and nerlich

0401 029 381  
kate@manarchitects.com.au  
www.manarchitects.com.au



**Upe Miera**

— Rara Architecture

03 9328 4220  
wesley@raraarchitecture.com.au  
www.raraarchitecture.com.au



**Us**

— Steffen Welsch  
Architects Pty Ltd

03 9988 9411  
sw@steffenwelsch.com.au  
www.steffenwelsch.com.au



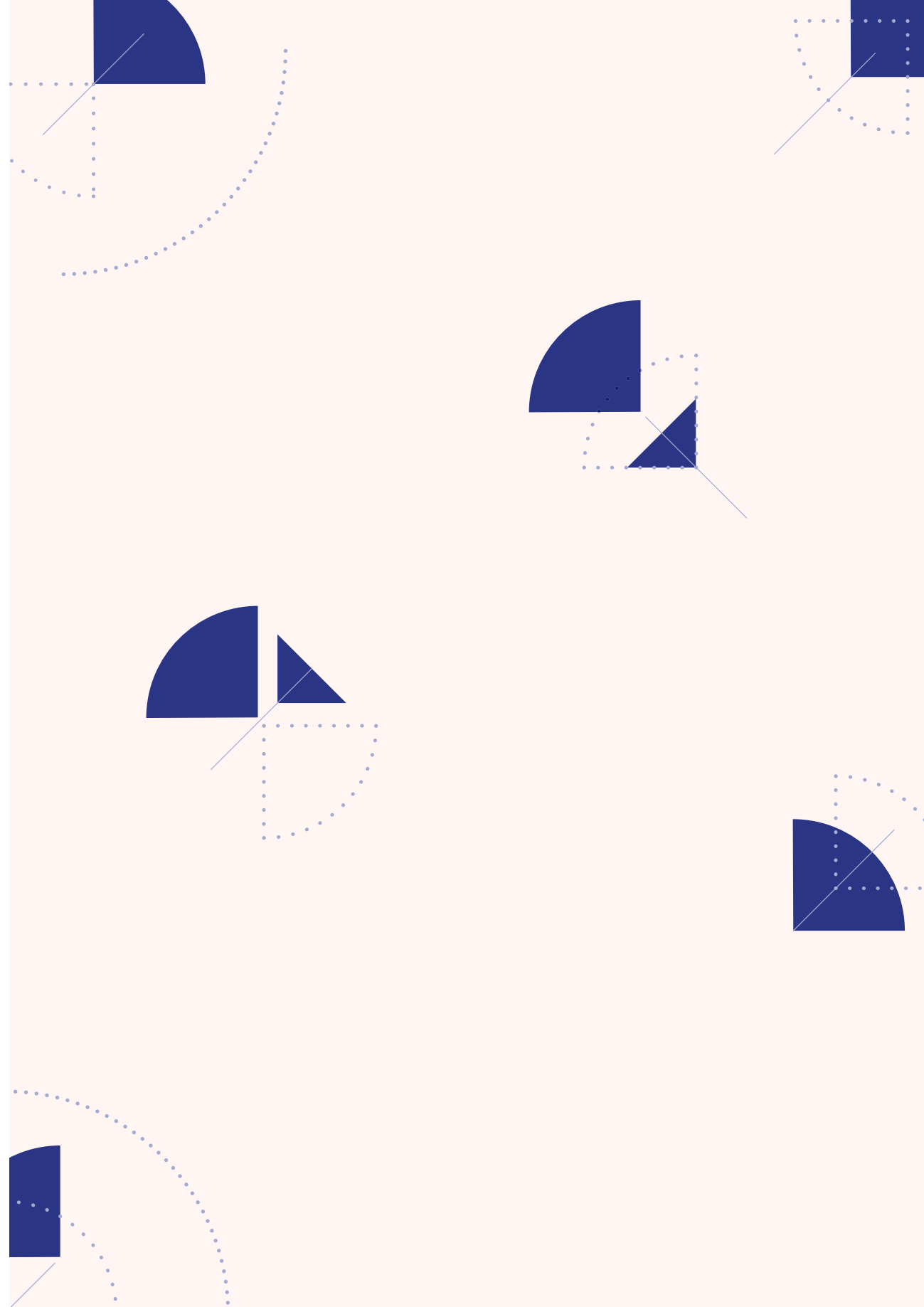
# — Thank You

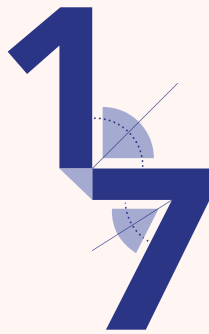
The ArchiTeam Board would like to thank all members who have contributed entries to the ArchiTeam Awards 2017.

ArchiTeam would like to extend its gratitude to this year's judges – Albert Mo, Karen Alcock, Fiona Winzar, Aaron Peters, Grace Mortlock, Grant Amon and Emma Telfer for their generosity in judging this year's awards program. Additionally, ArchiTeam would like to acknowledge the support of this year's sponsors as well as the invaluable creative talents of Celeste Njoo for the Awards graphics.

ArchiTeam is proudly a cooperative and thanks all members for their ongoing contribution in ensuring the community and spirit of the organisation.

Further information on ArchiTeam or to view our members profiles please visit [www.architeam.net.au](http://www.architeam.net.au)





**ARCHITEAM**